

PASSENGER ADDRESS AND COCKPIT SPEAKER SYSTEM - REMOVAL/INSTALLATION

1. General

- A. This section covers removal and installation procedures for the passenger address headphone amplifier, cockpit speaker amplifier, passenger address speaker and cockpit speaker.
- B. The passenger address headphone amplifier and the cockpit speaker amplifier is located aft of the copilot position on lower fuselage at FS 175, underneath the right side cabin floor board.

2. Passenger Address Headphone And Cockpit Speaker Amplifier Removal/Installation (Airplane 208B00741)

- A. Remove the passenger address headphone and cockpit speaker amplifiers (Refer to Figure 401).
 - (1) Remove external electrical power from the airplane.
 - (2) Disengage the AUDIO 1, AUDIO 2, PA AMP, PKR AMP and ICS circuit breakers.
 - (3) Get access to cabin floorboard panel cover. Reference Chapter 6, Access Plates And Panels Identification - Description And Operation.
 - (4) To get access to the amplifiers, remove the center cabin floorboard 252AR.
 - (5) Disconnect the audio cable from the applicable amplifier.
 - (6) Remove the screws that attach the applicable unit to the mount.
 - (7) Carefully remove the applicable unit.
 - (8) Engage the AUDIO 1, AUDIO 2, PA AMP, SPKR AMP and ICS circuit breakers.
- B. Install the Passenger Address System and Cockpit Speaker Amplifier (Refer to Figure 401).
 - (1) Put the applicable amplifiers in its correct position.
 - (a) Install the screws that attach the amplifier to the mount.
 - (2) Connect the applicable audio cable.
 - (3) Install the center cabin floorboard.
 - (4) Install the cabin floorboard panel cover. Reference Chapter 6, Access Plates And Panels Identification - Description And Operation.
 - (5) Engage the AUDIO 1, AUDIO 2, PA AMP, SPKR AMP and ICS circuit breakers.

3. Passenger Address Speaker And Cockpit Speaker Removal/Installation

- A. Remove the passenger address speaker or cockpit speaker. (Refer to Figure 402).
 - (1) Remove and keep the four speaker cover screws and speaker cover
NOTE: If necessary, support the speaker during the procedure.
 - (2) Disconnect the electrical connectors from the speaker terminals.
 - (3) Remove the speaker from the aircraft.
- B. Install the passenger address speaker or cockpit speaker. (Refer to Figure 402).
 - (1) Position the speaker onto the mounting bracket
NOTE: If necessary, support the speaker during the procedure.
 - (2) Connect the electrical connectors to the speaker terminals.
 - (3) Install the four speaker cover screws and speaker cover.
- C. Perform an operational check of the speaker.
 - (1) Tune the radio to a known local radio station and listen for proper speaker output.

Figure 401 : Sheet 1 : Passenger Address and Cockpit Speaker Amplifier

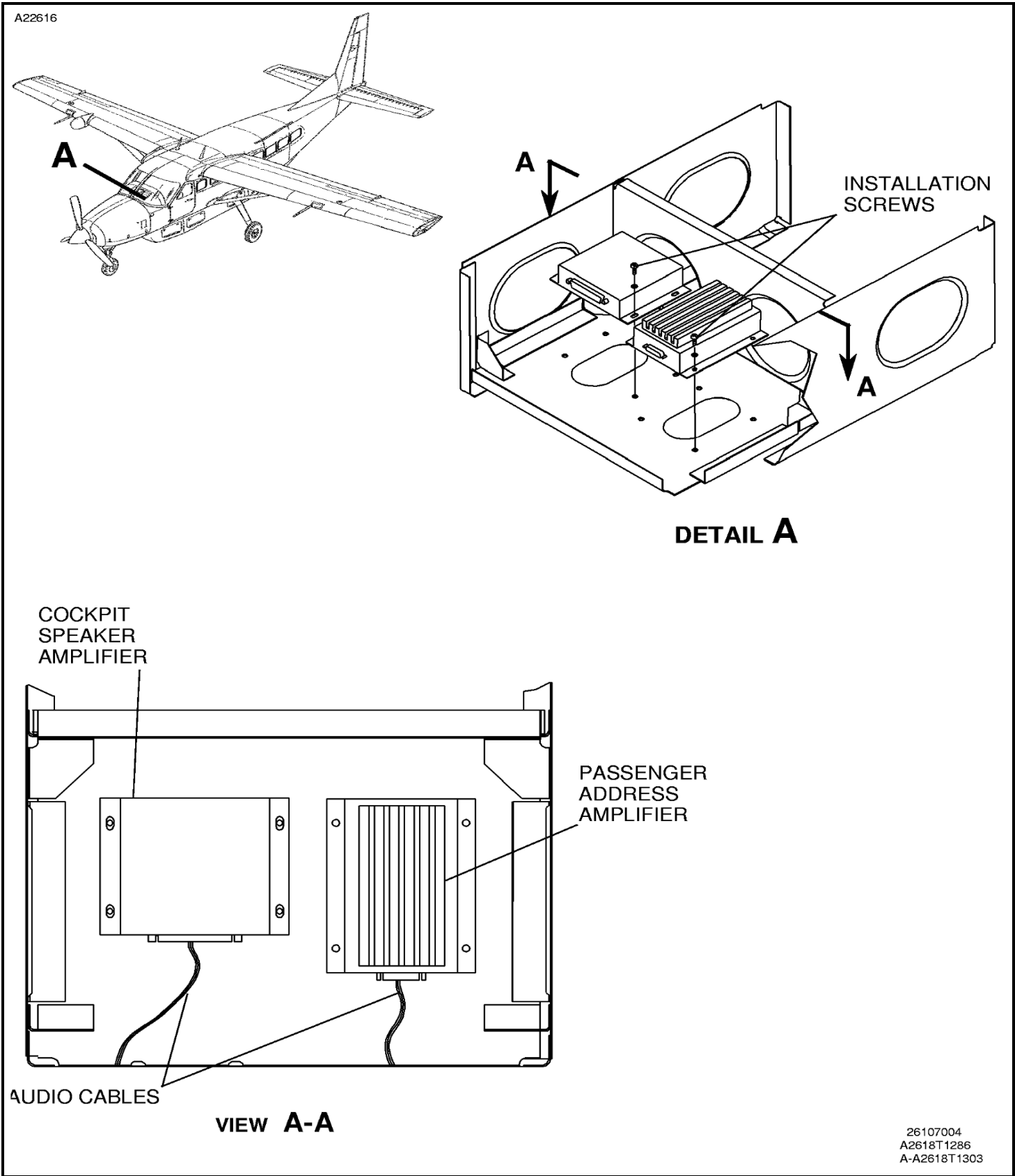
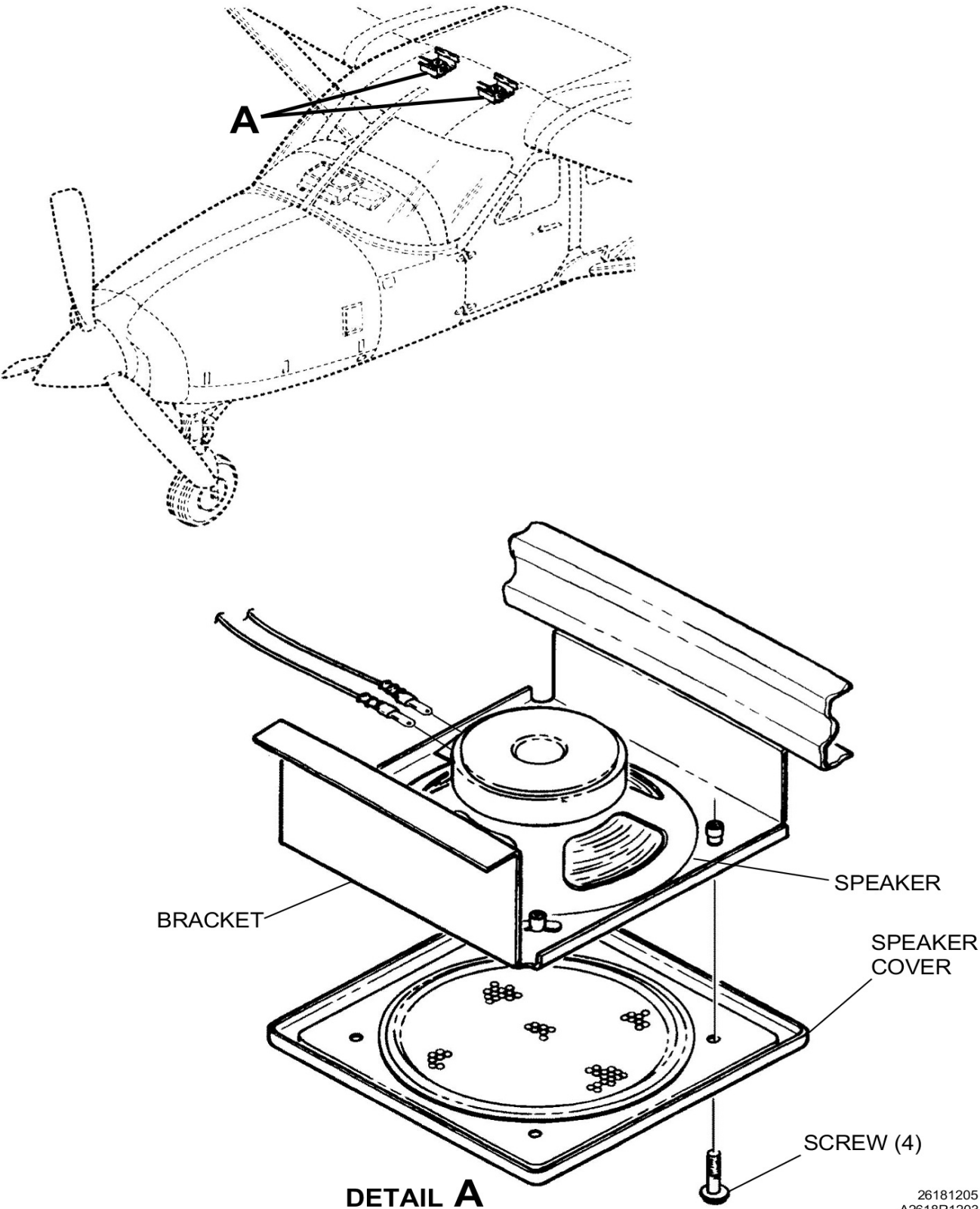


Figure 402 : Sheet 1 : Speaker Removal and Installation

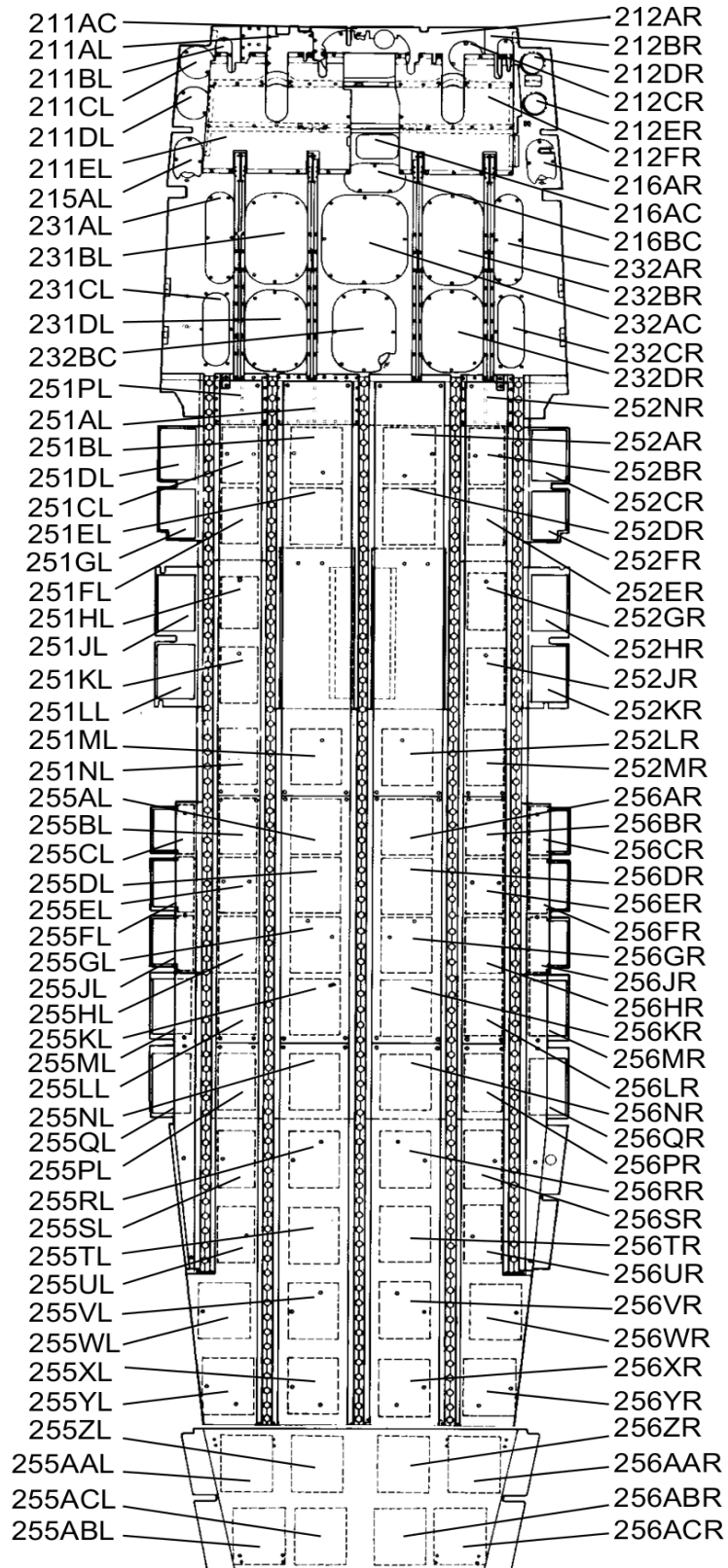
A105389



26181205
A2618R1203

Figure 4 : Sheet 1 : Model 208B and 208B Super Cargomaster Panels

A22957



MODEL 208B AND 208B SUPER CARGOMASTER ONLY

2611R4003
2611R3008